



**REGIONAL SPECIALISED METEOROLOGICAL CENTRE-TROPICAL CYCLONES, NEW DELHI
TROPICAL WEATHER OUTLOOK**

DEMS-RSMC TROPICAL CYCLONES NEW DELHI DATED 02.04.2021

SPECIAL TROPICAL WEATHER OUTLOOK FOR NORTH INDIAN OCEAN (THE BAY OF BENGAL AND ARABIAN SEA) VALID FOR NEXT 120 HOURS ISSUED AT 1900 UTC OF 02.04.2021 BASED ON 1800 UTC OF 02.04.2021.

BAY OF BENGAL:

THE DEPRESSION OVER NORTH ANDAMAN SEA & NEIGHBOURHOOD MOVED NORTH-NORTHEASTWARDS WITH A SPEED OF 12 KMPH DURING PAST 06 HOURS AND LAY CENTRED AT 1800 UTC OF 02ND APRIL, 2021 NEAR LATITUDE 12.3°N AND LONGITUDE 97.2°E, ABOUT 490 KM EAST-NORTHEAST OF PORT BLAIR (43333), 500 KM NORTH-NORTHWEST OF PHUKET (48564) AND 500 KM SOUTH-SOUTHEAST OF YANGON (48097). IT IS LIKELY TO MOVE NORTH-NORTHEASTWARDS TOWARDS MYANMAR COAST.

FORECAST TRACK AND INTENSITY ARE GIVEN IN THE FOLLOWING TABLE:

DATE/TIME(UTC)	POSITION [LAT. °N/ LONG. °E]	MAXIMUM SUSTAINED SURFACE WIND SPEED (KMPH)	CATEGORY OF CYCLONIC DISTURBANCE
02.04.21/1800	12.3/97.2	45-55 GUSTING TO 65	DEPRESSION
03.04.21/0000	12.5/97.3	45-55 GUSTING TO 65	DEPRESSION
03.04.21/1200	13.3/97.5	40-50 GUSTING TO 60	DEPRESSION

THE ESTIMATED MAXIMUM SUSTAINED WIND SPEED IS 25 KNOTS GUSTING TO 35 KNOTS. THE SEA CONDITION IS ROUGH TO VERY ROUGH AROUND THE SYSTEM CENTER. THE ESTIMATED CENTRAL PRESSURE IS 1000 HPA.

AS PER INSAT-3D IMAGERY AT 1800 UTC OF 02ND APRIL, THE INTENSITY OF THE SYSTEM IS T 1.5. THE CONVECTION IS ORGANISED AS SHEAR PATTERN. CONVECTIVE CLOUDS CLUSTERS ARE SHEARED TO NORTH. THE THREE CLUSTERS MERGED INTO TWO AROUND 0900 UTC. OUT OF THESE TWO, THE NORTHERN CLUSTER DISSIPATED AND THE SOUTHERN CLUSTER MOVED NORTH-NORTHEASTWARDS MAINTAINING IT'S INTENSITY DURING PAST THREE HOURS. THE AREA OF VERY INTENSE CONVECTION (-93°C) LAY OVER NORTH ANDAMAN SEA & GULF OF MARTABAN TO THE NORTHEAST OF SYSTEM CENTER. BROKEN LOW & MEDIUM CLOUDS WITH EMBEDDED INTENSE TO VERY INTENSE CONVECTION LAY OVER NORTH ANDAMAN SEA AND ADJOINING ANDAMAN ISLANDS BETWEEN LATITUDE 10.5°N & 17.0°N AND LONGITUDE 93.5°E & 97.0°E. MINIMUM CLOUD TOP TEMPERATURE IS -93°C.

REMARKS:

THE LOW LEVEL POSITIVE VORTICITY IS ABOUT $100 \times 10^{-6} \text{SEC}^{-1}$ OVER ANDAMAN SEA TO THE SOUTHEAST OF THE SYSTEM CENTRE. THE MAGNITUDE OF POSITIVE LOW LEVEL CONVERGENCE OVER THE SYSTEM AREA REMAINED SAME DURING PAST 06 HOURS ($20 \times 10^{-5} \text{SEC}^{-1}$). THE POSITIVE UPPER LEVEL DIVERGENCE HAS DECREASED SLIGHTLY IN MAGNITUDE ($10 \times 10^{-5} \text{SEC}^{-1}$) DURING PAST 09 HOURS AND IT LAY OVER THE SYSTEM CENTRE. IT IS STILL COUPLED WITH THE LOW LEVEL CONVERGENCE ZONE. THE CIRUS OUTFLOW HAS INCREASED IN PAST 3-HOURS. VERTICAL WIND SHEAR (VWS) HAS DECREASED AND IS NOW LOW TO MODERATE (10-15 KTS) OVER NORTH ANDAMAN SEA AND ALONG THE FORECAST TRACK. THE UPPER TROPOSPHERIC RIDGE RAN ALONG 13°N OVER THE BOB. UNDER THE INFLUENCE OF THE ANTICYCLONIC CIRCULATION OVER SOUTHEAST ASIA AND MID TROSPHERIC WESTERLIES THE DEPRESSION WOULD MOVE NORTH-NORTHEASTWARDS TOWARDS MYANMAR COAST.

THE TROPICAL CYCLONE HEAT POTENTIAL OVER THE REGION IS AROUND 80 KJ PER SEC AND THE SEA SURFACE TEMPERATURES ARE 29-30 DEG.C OVER THE REGION.

A FEW MODELS ARE INDICATING ITS NORTH-NORTHEASTWARDS MOVEMENT TOWARDS MYANMAR COAST DURING NEXT 24 HOURS.

CONSIDERING ALL THESE, THE DEPRESSION OVER NORTH ANDAMAN SEA IS LIKELY TO TO MOVE NORTH-NORTHEASTWARDS TOWARDS MYANMAR COAST DURING NEXT 24 HOURS.

NEXT BULLETIN WILL BE ISSUED AT 0300 UTC OF 03RD APRIL 2021.

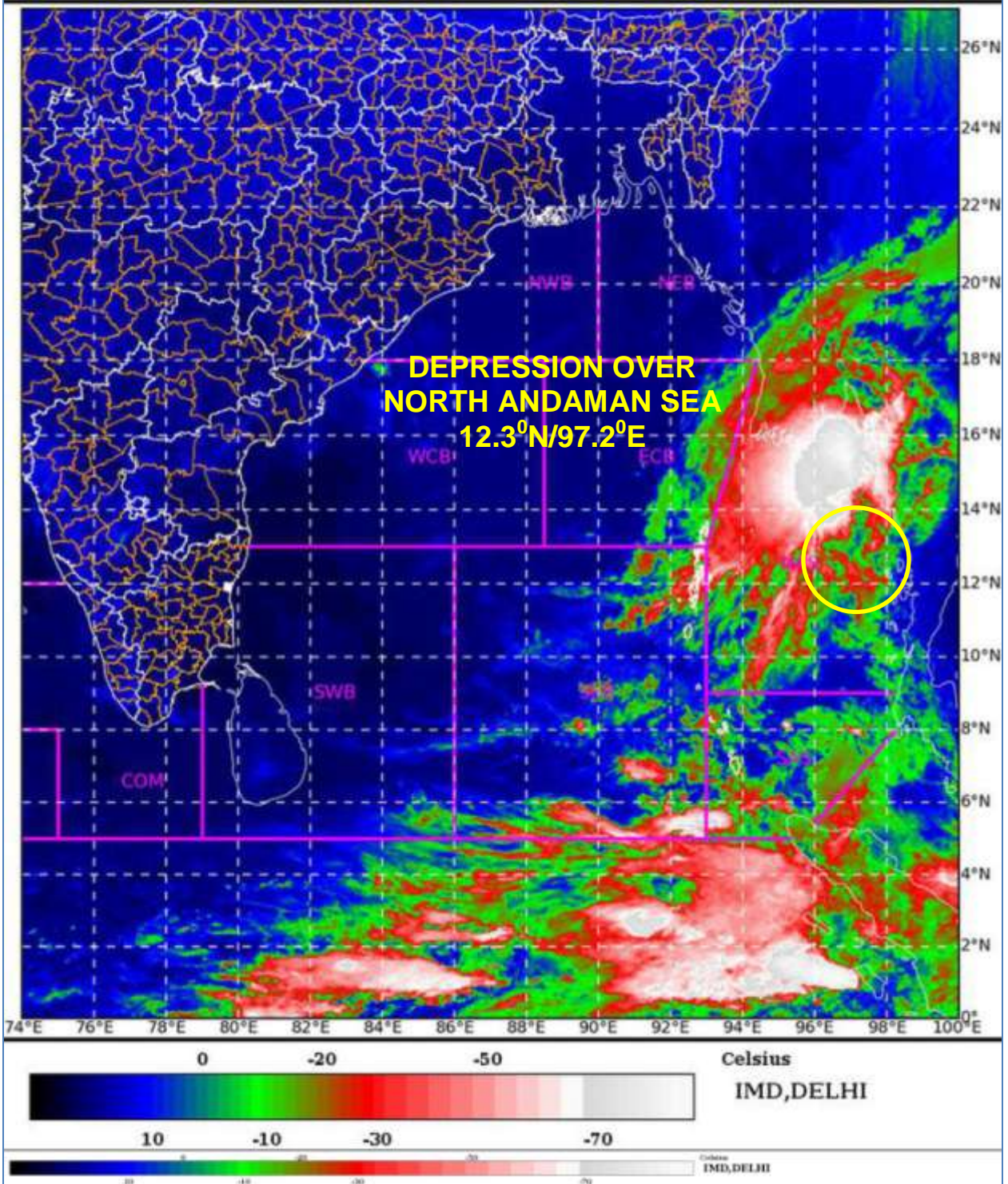
(SHOBHIT KATIYAR)
SCIENTIST- C
RSMC NEW DELHI

SAT : INSAT-3DR IMG
IMG_TIR1_TEMP 10.8 um
LIC Mercator

02-04-2021/(1715 to 1742) GMT
02-04-2021/(2245 to 2312) IST

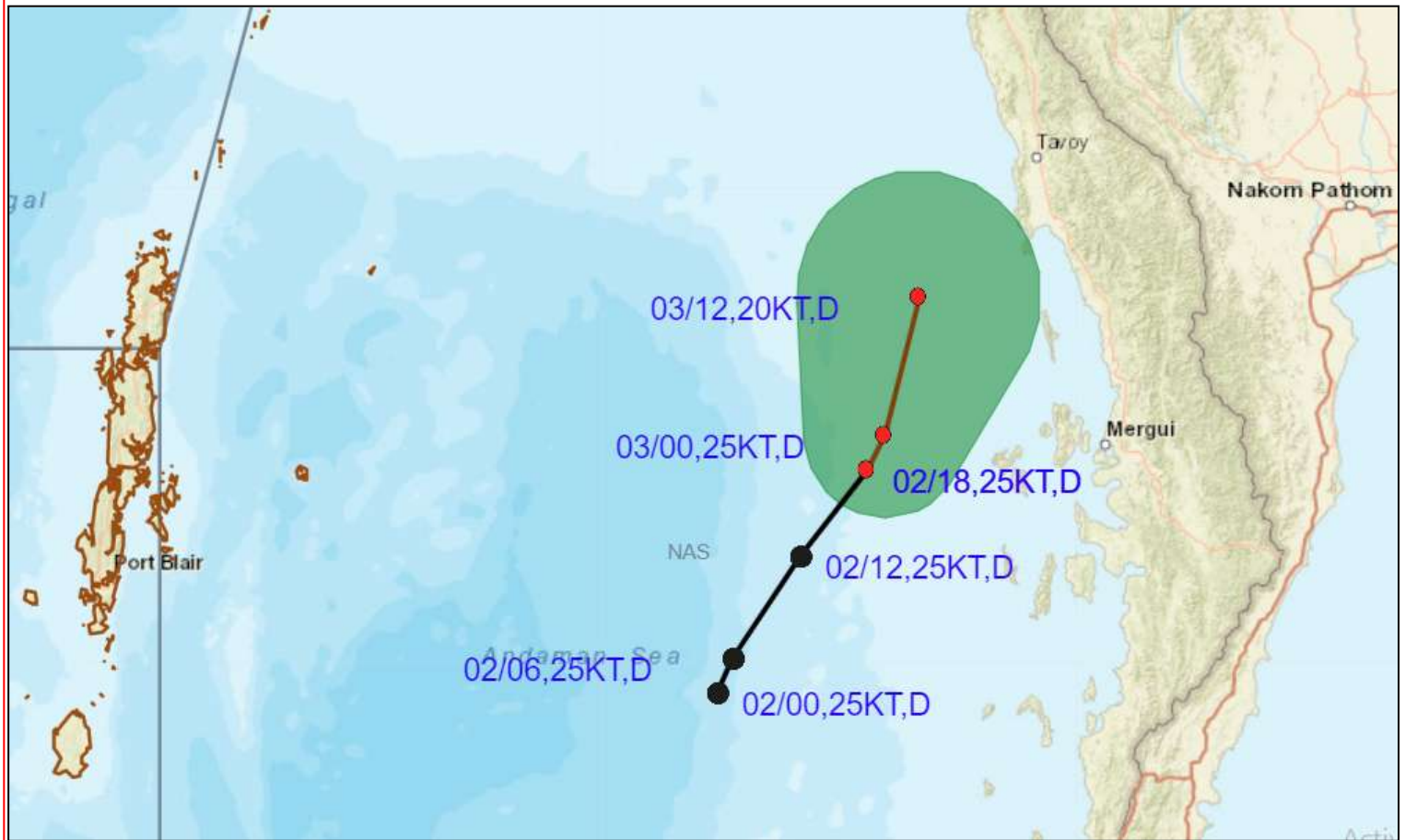


SAT : INSAT-3DR IMG 02-04-2021/(1715 to 1742) GMT
IMG_TIR1_TEMP 10.8 um 02-04-2021/(2245 to 2312) IST
LIC Mercator





OBSERVED TRACK ALONGWITH CONE OF UNCERTAINTY OF DEPRESSION OVER NORTH ANDAMAN SEA BASED ON 1800 UTC OF 2ND APRIL, 2021.



DATE/TIME IN UTC
IST=UTC + 0530
L: LOW PRESSURE AREA
WML: WELL MARKED LOW PRESSURE AREA
D: DEPRESSION (17-27 KT)
DD: DEEP DEPRESSION (28-33 KT)
CS: CYCLONIC STORM (34-47 KT)
SCS: SEVERE CYCLONIC STORM (48-63KT)
VSCS: VERY SEVERE CYCLONIC STORM (64-89 KT)
ESCS: EXTREMELY SEVERE CYCLONIC STORM (90-119 KT)
SuCS: SUPER CYCLONIC STORM (\geq 120 KT)

- LESS THAN 34 KT
- ⊙ 34-47 KT
- ⊙ \geq 48 KT
- OBSERVED TRACK
- FORECAST TRACK
- ▲ CONE OF UNCERTAINTY